

2023 Annual Drinking Water Quality Report ***Old Fort***

Water System Number: NC0156025

Este informe contiene información muy importante sobre su agua potable. Tradúzcalo o hable con alguien que lo entienda bien.

We are pleased to present to you this year's Annual Drinking Water Quality Report. This report is a snapshot of last year's water quality. Included are details about your source(s) of water, what it contains, and how it compares to standards set by regulatory agencies. Our constant goal is to provide you with a safe and dependable supply of drinking water. We want you to understand the efforts we make to continually improve the water treatment process and protect our water resources. We are committed to ensuring the quality of your water and to providing you with this information because informed customers are our best allies. **If you have any questions about this report or concerning your water, please contact Gail Turner at (828) 688-4244. We want our valued customers to be informed about their water utility. If you want to learn more, please attend any of our regularly scheduled meetings. They are held monthly at Old Fort Town Hall on the second or third Monday of each month at 5:30 PM. Please contact Town Hall at (828) 688-4244 for each month's meeting date.**

What EPA Wants You to Know

Drinking water, including bottled water, may reasonably be expected to contain at least small amounts of some contaminants. The presence of contaminants does not necessarily indicate that water poses a health risk. More information about contaminants and potential health effects can be obtained by calling the Environmental Protection Agency's Safe Drinking Water Hotline (800-426-4791).

Some people may be more vulnerable to contaminants in drinking water than the general population. Immuno-compromised persons such as persons with cancer undergoing chemotherapy, persons who have undergone organ transplants, people with HIV/AIDS or other immune system disorders, some elderly, and infants can be particularly at risk from infections. These people should seek advice about drinking water from their health care providers. EPA/CDC guidelines on appropriate means to lessen the risk of infection by *Cryptosporidium* and other microbial contaminants are available from the Safe Drinking Water Hotline (800-426-4791).

If present, elevated levels of lead can cause serious health problems, especially for pregnant women and young children. Lead in drinking water is primarily from materials and components associated with service lines and home plumbing. [Name of Utility] is responsible for providing high quality drinking water, but cannot control the variety of materials used in plumbing components. When your water has been sitting for several hours, you can minimize the potential for lead exposure by flushing your tap for 30 seconds to 2 minutes before using water for drinking or cooking. If you are concerned about lead in your water, you may wish to have your water tested. Information on lead in drinking water, testing methods, and steps you can take to minimize exposure is available from the Safe Drinking Water Hotline or at <http://www.epa.gov/safewater/lead>.

The sources of drinking water (both tap water and bottled water) include rivers, lakes, streams, ponds, reservoirs, springs, and wells. As water travels over the surface of the land or through the ground, it dissolves naturally-occurring minerals and, in some cases, radioactive material, and can pick up substances resulting from the presence of animals or from human activity. Contaminants that may be present in source water include microbial contaminants, such as viruses and bacteria, which may come from sewage treatment plants, septic systems, agricultural livestock operations, and wildlife; inorganic contaminants, such as salts and metals, which can be naturally-occurring or result from urban stormwater runoff, industrial or domestic wastewater discharges, oil and gas production, mining, or farming; pesticides and herbicides, which may come from a variety of sources such as agriculture, urban stormwater runoff, and residential uses; organic chemical contaminants, including synthetic and volatile organic chemicals, which are by-products of industrial processes and petroleum production, and can also come from gas stations, urban stormwater runoff, and septic systems; and radioactive contaminants, which can be naturally-occurring or be the result of oil and gas production and mining activities.

In order to ensure that tap water is safe to drink, EPA prescribes regulations which limit the amount of certain contaminants in water provided by public water systems. FDA regulations establish limits for contaminants in bottled water, which must provide the same protection for public health.

When You Turn on Your Tap, Consider the Source

The water that is used by this system is groundwater pumped from four wells: three are located on Curtis Creek and one is located near the Catawba River. They draw their water from the Brevard Fault Aquifer, a large underground source. We add chlorine bleach for disinfection and orthophosphate for corrosion control.

Source Water Assessment Program (SWAP) Results

The North Carolina Department of Environmental Quality (DEQ), Public Water Supply (PWS) Section, Source Water Assessment Program (SWAP) conducted assessments for all drinking water sources across North Carolina. The purpose of the assessments was to determine the susceptibility of each drinking water source (well or surface water intake) to Potential Contaminant Sources (PCSs). The results of the assessment are available in SWAP Assessment Reports that include maps, background information and a relative susceptibility rating of Higher, Moderate or Lower.

The relative susceptibility rating of each source for **The Town of Old Fort** was determined by combining the contaminant rating (number and location of PCSs within the assessment area) and the inherent vulnerability rating (i.e., characteristics or existing conditions of the well or watershed and its delineated assessment area). The assessment findings are summarized in the table below:

Susceptibility of Sources to Potential Contaminant Sources (PCSs)

Source Name	Susceptibility Rating	SWAP Report Date
Well # 10	Moderate	September 2020
Well # 5	Lower	September 2020
Well # 9	Higher	September 2020
Well # 2	Lower	September 2020

The complete SWAP Assessment report for the **Town of Old Fort** may be viewed on the Web at:

<https://www.ncwater.org/?page=600> Note that because SWAP results and reports are periodically updated by the PWS Section, the results available on this web site may differ from the results that were available at the time this CCR was prepared. If you are unable to access your SWAP report on the web, you may mail a written request for a printed copy to: Source Water Assessment Program – Report Request, 1634 Mail Service Center, Raleigh, NC 27699-1634, or email requests to swap@ncdenr.gov. Please indicate your system name, number, and provide your name, mailing address and phone number. If you have any questions about the SWAP report please contact the Source Water Assessment staff by phone at 919-707-9098.

It is important to understand that a susceptibility rating of “higher” does not imply poor water quality, only the system’s potential to become contaminated by PCSs in the assessment area.

Help Protect Your Source Water

Protection of drinking water is everyone’s responsibility. You can help protect your community’s drinking water source(s) in several ways: (examples: dispose of chemicals properly; take used motor oil to a recycling center, volunteer in your community to participate in group efforts to protect your source, etc.

Violations that Your Water System Received for the Report Year

During 2023, or during any compliance period that ended in 2023, we received no violations.

Important Drinking Water Definitions:

- ***Not-Applicable (N/A)*** – Information not applicable/not required for that particular water system or for that particular rule.
 - ***Non-Detects (ND)*** - Laboratory analysis indicates that the contaminant is not present at the level of detection set for the particular methodology used.
 - ***Parts per million (ppm) or Milligrams per liter (mg/L)*** - One part per million corresponds to one minute in two years or a single penny in \$10,000.
 - ***Parts per billion (ppb) or Micrograms per liter (ug/L)*** - One part per billion corresponds to one minute in 2,000 years, or a single penny in \$10,000,000.
 - ***Picocuries per liter (pCi/L)*** - Picocuries per liter is a measure of the radioactivity in water.
 - ***Million Fibers per Liter (MFL)*** - Million fibers per liter is a measure of the presence of asbestos fibers that are longer than 10 micrometers.
 - ***Nephelometric Turbidity Unit (NTU)*** - Nephelometric turbidity unit is a measure of the clarity of water. Turbidity in excess of 5 NTU is just noticeable to the average person.
 - ***Variances and Exceptions*** – State or EPA permission not to meet an MCL or Treatment Technique under certain conditions.
 - ***Action Level (AL)*** - The concentration of a contaminant which, if exceeded, triggers treatment or other requirements which a water system must follow.
 - ***Treatment Technique (TT)*** - A required process intended to reduce the level of a contaminant in drinking water.
 - ***Maximum Residual Disinfection Level (MRDL)*** – The highest level of a disinfectant allowed in drinking water. There is convincing evidence that addition of a disinfectant is necessary for control of microbial contaminants.
 - ***Maximum Residual Disinfection Level Goal (MRDLG)*** – The level of a drinking water disinfectant below which there is no known or expected risk to health. MRDLGs do not reflect the benefits of the use of disinfectants to control microbial contaminants.
 - ***Locational Running Annual Average (LRAA)*** – The average of sample analytical results for samples taken at a particular monitoring location during the previous four calendar quarters under the Stage 2 Disinfectants and Disinfection Byproducts Rule.
 - ***Running Annual Average (RAA)*** – The average of sample analytical results for samples taken during the previous four calendar quarters.
 - ***Level 1 Assessment*** - *A Level 1 assessment is a study of the water system to identify potential problems and determine (if possible) why total coliform bacteria have been found in our water system.*
 - ***Level 2 Assessment*** - *A Level 2 assessment is a very detailed study of the water system to identify potential problems and determine (if possible) why an E. coli MCL violation has occurred and/or why total coliform bacteria have been found in our water system on multiple occasions.*
 - ***Maximum Contaminant Level (MCL)*** - The highest level of a contaminant that is allowed in drinking water. MCLs are set as close to the MCLGs as feasible using the best available treatment technology.
 - ***Maximum Contaminant Level Goal (MCLG)*** - The level of a contaminant in drinking water below which there is no known or expected risk to health. MCLGs allow for a margin of safety.
-

Water Quality Data Tables of Detected Contaminants

We routinely monitor for over 150 contaminants in your drinking water according to Federal and State laws. The tables below list all the drinking water contaminants that we detected in the last round of sampling for each particular contaminant group. The presence of contaminants does not necessarily indicate that water poses a health risk. **Unless otherwise noted, the data presented in this table is from testing done January 1 through December 31, 2023.** The EPA and the State allow us to monitor for certain contaminants less than once per year because the concentrations of these contaminants are not expected to vary significantly from year to year. Some of the data, though representative of the water quality, is more than one year old.

REVISED TOTAL COLIFORM RULE:

Microbiological Contaminants in the Distribution System

Contaminant (units)	MCL Violation Y/N	Number of Positive/Present Samples	MCLG	MCL	Likely Source of Contamination
Total Coliform Bacteria (presence or absence)	N/A	N/A	N/A	TT*	Naturally present in the environment
<i>E. coli</i> (presence or absence)	N	Absent	0	Routine and repeat samples are total coliform-positive and either is <i>E. coli</i> -positive or system fails to take repeat samples following <i>E. coli</i> -positive routine sample or system fails to analyze total coliform-positive repeat sample for <i>E. coli</i> Note: If either an original routine sample and/or its repeat samples(s) are <i>E. coli</i> positive, a Tier 1 violation exists.	Human and animal fecal waste

Inorganic Contaminants

Contaminant (units)	Sample Date	MCL Violation Y/N	Your Water	Range		MCLG	MCL	Likely Source of Contamination
				Low	High			
Fluoride (ppm)	2022	N	0.175	ND – 0.175		4	4	Erosion of natural deposits; water additive which promotes strong teeth; discharge from fertilizer and aluminum factories

Nitrate/Nitrite Contaminants: Wells 5, 9, and 10

Contaminant (units)	Sample Date	MCL Violation Y/N	Your Water	Range		MCLG	MCL	Likely Source of Contamination
				Low	High			
Nitrate (as Nitrogen) (ppm)	2022	N	ND	N/A		10	10	Runoff from fertilizer use; leaching from septic tanks, sewage; erosion of natural deposits

Nitrate/Nitrite Contaminants: Well 2

Contaminant (units)	Sample Date	MCL Violation Y/N	Your Water	Range		MCLG	MCL	Likely Source of Contamination
				Low	High			
Nitrate (as Nitrogen) (ppm)	2022	N	1.1	N/A		10	10	Runoff from fertilizer use; leaching from septic tanks, sewage; erosion of natural deposits

Nitrate: Nitrate in drinking water at levels above 10 ppm is a health risk for infants of less than six months of age. High nitrate levels in drinking water can cause blue baby syndrome. Nitrate levels may rise quickly for short periods of time because of rainfall or agricultural activity. If you are caring for an infant you should ask advice from your health care provider.

Lead and Copper Contaminants

Contaminant (units)	Sample Date	Your Water	Number of sites found above the AL	MCLG	AL	Likely Source of Contamination
Copper (ppm) (90 th percentile)	9/22/22	0.772	0	1.3	AL=1.3	Corrosion of household plumbing systems; erosion of natural deposits
Lead (ppb) (90 th percentile)	9/22/22	< 3	0	0	AL=15	Corrosion of household plumbing systems; erosion of natural deposits

Disinfectant Residuals Summary

	MRDL Violation Y/N	Your Water (RAA)	Range Low High	MRDLG	MRDL	Likely Source of Contamination
Chlorine (ppm)	N	0.84	0.7 – 1.2	4	4.0	Water additive used to control microbes

Total Trihalomethanes (TTHM) and Haloacetic Acids (five) (HAA5)

Contaminant (units)	Year Sampled	MCL Violation Y/N	Your Water (highest LRAA)	Range Low High	MCLG	MCL	Likely Source of Contamination
TTHM (ppb)	2023	N			N/A	80	Byproduct of drinking water disinfection
B01			O	N/A			
HAA5 (ppb)	2023	N			N/A	60	Byproduct of drinking water disinfection
B01			ND	N/A			

Other Miscellaneous Water Characteristics Contaminants

Contaminant (units)	Sample Date	Your Water	Range Low High	SMCL
Sodium (ppm)	2022	9.17	8.13 - 11.1	N/A
pH	2022	7.2	7.16 - 7.27	6.5 to 8.5

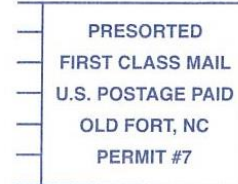
UCMR5 Sampling

Contaminant	Minimum Reporting	Health-Based Ref Conc (µg/L)	Total Results	Results ≥ MRL	Results > Health-Based Ref Conc
lithium	9	10	4	4	0
HFPO-DA	0.005	0.01	4	0	0
PFBS	0.003	2	4	1	0
PFOS	0.004	0.00002	4	0	0
PFOA	0.004	0.000004	4	0	0

TOWN OF OLD FORT

38 CATAWBA AVENUE, OLD FORT, NC 28762
Phone: 828-668-4244

1729-00
12.00
03/01/2024



SERVICE	CHARGES	PAST DUE	BALANCE
Account: 1729-00		Billed: 02/28/2024	
DEBT SERVICE	12.00	0.00	12.00

RETURN SERVICE REQUESTED

Totals: 12.00 0.00 12.00
Resident: **SRIN ADAMS**
40 ADAMS DR
Last Payment: 12.00 - 02/13/2024
Current: 0 02/13/2024
Previous: 0 01/15/2024
Usage: 0
>>> PLEASE PAY \$ 12.00 BY 03/01/2024 <<<

SRIN ADAMS
PO BOX 1176
OLD FORT NC 28762-1176



When paying at office,
bring entire bill with you.

MAKE CHECKS PAYABLE TO:

TOWN OF OLD FORT
38 CATAWBA AVENUE
OLD FORT, N.C. 28762
(828) 668-4244

PLEASE ENCLOSE THIS
STUB WHEN PAYING BY MAIL

IMPORTANT - PLEASE READ
PAYABLE AT THE TOWN OFFICE BY THE 15TH OF THE MONTH OR A \$10.00 PENALTY WILL BE ADDED, IF PAYMENT IS NOT MADE BY THE 25TH OF THE MONTH SERVICE WILL BE DISCONTINUED AND A RECONNECTION FEE OF \$100.00 WILL BE CHARGED WHETHER THE WATER HAS BEEN CUT OFF OR NOT.

NOTICE: METER TAMPERING LAW
\$5,000.00 FINE, 2 YEARS IN PRISON OR BOTH FOR TAMPERING WITH METER. (G.S. 14-151.1)

COLLECTION & TREATMENT PERFORMANCE REPORT
AVAILABLE AT WWW.TOWNOFOLDFORT.ORG/SEWER OR A PAPER COPY CAN BE PICK-UP TOWN HALL.

CONSUMER CONFIDENCE REPORT (CCR)
AVAILABLE AT WWW.TOWNOFOLDFORT.ORG/WATER OR A PAPER COPY CAN BE PICK-UP TOWN HALL.